

DETAILED ESTIMATE
FOR

NAME OF WORK : PROPOSED CONSTRUCTION OF WARE
HOUSE UNIT UNDER SMART PROJECT SCHEME IN GUT
NO. 71 OF AT BHOISMUDRA TQ LATUR AND DIST
LATUR

FOR - SVR KRUSHI MITRA PRODUCER COMPANY LTD. AT AKHARWAI, TQ LATUR


ESTIMATED COST RS. 88.14 LAKH

NAME OF WORK : PROPOSED CONSTRUCTION OF WARE HOUSE UNIT UNDER SMART PROJECT SCHEME IN GUT NO. 71 OF AT BHOISMUDRA TQ LATUR AND DIST LATUR

FOR - SVR KRUSHI MITRA PRODUCER COMPANY LTD. AT AKHARWAI, TQ LATUR DIST LATUR

GENERAL ABSTRACT

Cost of Work	Rs.	6940262.08
	Total Rs.	<u>6940262.08</u>
Add 18% for GST	Rs.	1249248.00
Add 4% for Contingencies	Rs.	277611.00
Add 5% for Electrification	Rs.	347014.00
	Grand Total Rs.	<u>8814135.08</u>


For Pawan Engineers, Latur

NAME OF WORK : PROPOSED CONSTRUCTION OF WARE HOUSE UNIT UNDER SMART PROJECT SCHEME
IN GUT NO. 71 OF AT BHOISMUDRA TQ LATUR AND DIST LATUR

FOR - SVR KRUSHI MITRA PRODUCER COMPANY LTD. AT AKHARWAI, TQ LATUR DIST LATUR

ABSTRACT SHEET

QTY.	PARTICULARS OF ITEMS	RATE	UNIT	AMOUNT
125.91	Item No.(1) Excavation for foundation in earth, soils of all types, sand, gravel and soft murum, including removing the excavated material upto a distance of 50 metres beyond the building area and stacking and spreading as directed, dewatering, preparing the bed for the foundation and necessary back filling, ramming, watering including shoring and strutting etc. complete. (Lift from 1.5m to 3.0m) By Mechanical Means (S.S.R. I.No. 21.02 P.No. 115)	193.00	Cum	24301.00
127.00	Item No.(2) Excavation for foundation in hard murum including removing the excavated material upto distance of 50 metres beyond the building area and stacking and spreading as directed, dewatering, preparing the bed for the foundation and necessary back filling, ramming, watering including shoring and strutting etc. complete. (Lift upto 1.50 m) By Mechanical Means (S.S.R. I.No. 21.06 P.No. 115)	212.00	Cum	26924.00
71.24	Item No.(3) Providing and laying in situ, cement concrete M-10/ 1:3:6 of trap/ granite/ quartzite/ gneiss metal for foundation and bedding including dewatering, formwork, compacting, roughening them if special finish is to be provided, finishing if required, and curing etc. complete. Spec. No. : Bd.F.1 Page No. 287 (S. e-S.S.R. I.No. 24.01 P.No. 131)	5538.00	Cum	394501.00
44.27	Item No.(4) Providing and laying in situ cement concrete M-20 of trap / granite /quartzite/ gneiss metal for R.C.C. work in undations like raft, strip foundations, grillage and footings of R.C.C. columns and steel stanchions etc. including bailing out water, formwork, cover blocks compaction and curing roughening the surface if special finish is to be provided (Excluding reinforcement and structural steel) etc. etc. complete, With fully automatic micro processor based PLC with SCADA enabled reversible drum type (S- S.S.R. I.No. 25.11, P.No. 133)	6666.00	Cum	295091.00
28.36	Item No.(5) Providing and laying Cast in situ/Ready Mix cement concrete M- 20 of trap / granite /quartzite/ gneiss metal for R.C.C. columns as per detailed designs and drawing or as directed including centering, formwork, cover blocks, laying / pumping, compaction finishing the formed surfaces with cement mortar 1:3 of sufficient minimum thickness to give a smooth and even surface or roughening if special finish is to be provided and curing etc.complete, (Excluding reinforcement and structural steel). with fully automatic micro processor based PLC with SCADA enabled reversible Drum Type mixer/ concrete Batch mix plant (Pan mixer) etc. complete. With natural sand/V.S.I. quality Artificial Sand Spec. No. : Bd.F.5 Page (S.S.R. I. No. 25.31 P. No. 134)	12987.00	Cum	368374.00

QTY.	PARTICULARS OF ITEMS	RATE	UNIT	AMOUNT
33.35	<p>Item No.(6) Providing and laying Cast in situ/Ready Mix cement concrete M- 20 of trap / granite /quartzite/ gneiss metal for R.C.C. beams and lintels as per detailed designs and drawings or as directed including centering, formwork, cover blocks, laying/pumping, compactionand roughening the surface if special finish is to be provided and curing etc. complete. (Excluding reinforcement and structural steel). with fully automatic micro processor based PLC with SCADA enabled reversible Drum Type mixer/ concrete Batch mix plant (Pan mixer) etc. complete. With natural sand/V.S.I. quality Artificial Sand Spec. No. : Bd.F.6 (S.S.R.I. No. 25.50 P. 135)</p>	11483.00	Cum.	382933.00
0.24	<p>Item No. (7) Providing and laying Cast in situ/Ready Mix cement concrete M- 20 of trap/ granite/ quartzite/ gneiss metal for R.C.C. PARDI as per detailed design and drawings including centering, formwork, cover blocks compacting , curing , finishing and roughening the surface if special finish is to be provided and curing complete. (Excluding reinforcement and structural steel).with fully automatic micro processor based PLC with SCADA enabled reversible Drum Type mixer/ concrete Batch mix plant (Pan mixer) etc. complete. With natural sand/V.S.I. quality Artificial Sand (S.S.R. I.No. 26.17, P.No. 137)</p>	14692.00	Cum	3526.08
3.07	<p>Item No.(8) Providing and laying Cast in situ/Ready Mix cement concrete M- 20 of trap/ granite / quartzite/ gneiss metal for R.C.C. slabs and landings as per detailed designs and drawings including entering, formwork, cover blocks, pumping,compactionfinishing the formed surfaces with cement mortar 1:3 of sufficient minimum thickness to give a smooth and even surface or roughening if special finish is to be provided and curing etc. complete, (Excluding reinforcement and structuralsteel). with fully automatic micro processor based PLC with SCADA enabled reversible Drum Type mixer/ concrete Batch mix plant (Pan mixer) etc. complete. With natural sand/V.S.I. quality Artificial Sand Spec. No. : Bd.F.8 Page No. 302 and B.7, Page 22 (S.S.R. I. No. 25.70 P. No. 135)</p>	13943.00	Cum	42843.00
1.87	<p>Item No.(9) Providing and laying Cast in situ / Ready Mix cement concrete in M-20 of trap / quartzite /granite / gneiss metal for R.C.C. Waist slab, and steps of staircases as per detailed design and drawings or as directed including steel centering, plywood/ steel formwork, steel props, laying/pumping, compaction, finishing uneven and honeycombed surface with C.M. 1:3 of sufficient minimum thickness to give a smooth and even surface or roughening the surface if special finish is to be provided and curing etc. complete. (Excluding einforcement, including cover block)(Newly laid concrete shall be covered by gunny bag, plastic, tarpaulin etc.) with fully automatic micro processor based PLC with SCADA enabled reversible Drum Type mixer/ concrete Batch mix plant (Pan mixer) etc. complete. With natural sand/V.S.I. quality Artificial Sand Spec. No. : Bd. F. 13 Page No. 305 /I.S. 456 (2000 (S.S.R.I.No. 26.25, P.No. 138)</p>	13137.00	Cum	24516.00

QTY.	PARTICULARS OF ITEMS	RATE	UNIT	AMOUNT
3.38	Item No.(10) Providing and laying Cast in situ/Ready Mix cement concrete M-20 of trap/ granite/ quartzite/ gneiss metal for R.C.C. chajja as per detailed design and drawings including steel centering, formwork, cover blocks compacting , curing , finishing and roughening the surface if special finish is to be provided and curing complete. (Excluding reinforcement and structural steel) with fully automatic micro processor based PLC with SCADA enabled reversible Drum Type mixer/ concrete Batch mix plant (Pan mixer) etc. complete. With fine aggregate (Natural Sand / Crushed sand VSI Grade finely washed etc) (S.S.R.I.No. 26.05, P.No. 137)	13111.00	Cum	44321.00
10.38	Item No.(11) Providing and fixing in position TMT - FE - 500 bar reinforcement of various diameters for R.C.C. pile caps, footings, foundations, slabs, beams columns, canopies, staircase, newels, chajjas, lintels pardis, copings, fins, arches etc. as per detailed designs, drawings and schedules. including cutting, bending, hooking the bars, binding with wires or tack welding and supporting as required complete. Spec No. : Bd E 17 Page No 206 (S.S.R. I.No.26.33, P.No. 139)	71778.00	M.T.	745200.00
86.19	Item No.(12) Providing soling using 80mm. size trap metal in 15cm. layer including filling voids with crused sand/grit, ramming, watering etc. complete. Spec. no. As directed by Engineer in charge . (S.S.R. I.No.21.40 P.No. 118)	1322.00	Cum	113940.00
344.75	Item No.(13) Filling in plinth and floors with contractors material/brought from outside and approved by Engineer incharge in layers of 15cm. To 20cm. including watering and compaction etc. complete. Spec. No.: Bd.A. 11/Page No 263 Spec. No. : Bd A 11 Page No 263 (S.S.R. I.No. 21.37, P.No. 117)	550.00	Cum	189613.00
12.64	Item No.(14) Providing second class Burnt Brick masonry with conventional/ I.S. type bricks in cement mortar 1:6 in foundations and plinth of inner walls/ in plinth external walls including bailing out water manually , striking joints on unexposed faces, raking out joints on exposed faces and watering etc. Complete. Spec. No. : Bd.G. 1 Page No. (S.S.R. I. No. 27.01 No. 144)	7343.00	Cum	92834.00
83.89	Item No.(15) Providing second class Burnt Brick masonry with conventional/ I.S. type bricks in cement mortar 1:6 in superstructure including striking joints, raking out joints, watering and scaffolding etc. Complete Spe. No. :Bd.G.5 (S.S.R.I.No. 27.05, P.No. 144)	7570.00	Cum	635058.00
10.24	Item No. (16) Providing second class Burnt Brick masonry with conventional / I.S. type bricks in cement mortar 1:4 in half brick thick wall including mild steel longitudinal reinforcement of 2 bars of 6 mm diameter / 2 hoop iron strips 25 mm X 1.6 mm placed at every third course, properly bent and bonded at ends scaffolding, racking out joints and watering etc. complete. Spec. No. : Bd.G. 7 (S.S.R. I.No. 27.06, P.No. 144)	1023.00	Sqm.	10481.00

QTY.	PARTICULARS OF ITEMS	RATE	UNIT	AMOUNT
1.44	Item No.(17) Providing and fixing 30mm thick SOLID PANEL PVC INTERNAL DOOR SHUTTER consisting of frame made out of M.S. tubes of 19 gauge thickness and size of 40mm x 20mm for stiles ,top, lock and bottom rails. M.S. frame shall have a coat of steel primers of approved make and manufacture. M.S. frame shall be covered with 5mm thick heat molded PVC channel of size 30 x 100mm forming stiles, and 5mm thick, 125mm wide PVC sheets for top rail, lock rail and bottom rail on either side, and 15mm (5mm x 3) thick, 20mm wide cross PVC sheet as gap insert for top rail and bottom rail. Paneling of 10 mm thick prelam PVC sheet to be fitted in the M.S. frame welded / sealed to the stiles and rails with 30mm wide x 5mm thick PVC sheet beading on either side, and joined together with solvent cement adhesive etc. An additional 5mm thick PVC strip of 20mm width is to be stuck on the interior side of the C Channel using PVC solvent cement adhesive. including stainless steel fixtures and fastening Complete as per direction of Engineerincharge. (S.S.R. I. No. 39.81 P. No. 190)	5868.00	Sqm	8421.00
7.20	Item No.(18) Providing and fixing collapsible steel gate in one / two leaves with hot rolled vertical channels of 18 x 9 x 3 mm minimum size, crossings of M.S. flats of size 18 x 5 mm T or E section for runner of minimum 40 x 6 mm size for flange, M.S. flat for top runner of minimum size 40 x 12 mm with roller wheels conforming to grade F.G. 150 fitted with snap headed rivets of minimum size 6 mm max. spacing of vertical channels be 100 mm enclosed gate position and clear space of 150 mm between two sets of crossings with hold fasts, stoppers, spaces, handles, locking arrangement and one coat of red lead primer and oil painting etc. complete. (I.S. 105211983). Spec. No. Bd. T. E7 Page No. E11 (S.S.R. I. No. 39.26 P. No. 182)	3736.00	Sqm	26900.00
14.54	Item No.(19) Providing and fixing machine cut machine polished 18 mm to 20 mm thick telephone black / Amba White / Cat bary brown / RBI red / Ocean Brown granite stone for treads and risers of steps and staircases of approved colour and shade with rounded moulding and three grooved line for the treads on bed of 1:4 Cement mortar including float filling joints with neat cement slurry curing polishing and cleaning etc. complete. (S.S.R.I.No. 33.35, P. No. 158)	4138.00	Sqm	60165.00
11.90	Item No. (20) Providing and fixing M40 grade thick vibrated pull cast or similar type concrete frame with chamfer conforming to I.S. 65241983 having 6 mm dia bars 3 Nos. And strips @250 mm c/c and fixing in wall with 6 Nos. of hold fast of 12 mm dia bars 500 mm long including primer and oil (S.S.R. I. No. 39.57 P. 187)	977.00	Rgm	11627.00
1.89	Item No. (21) Providing and fixing solid core flush door shutter in single leaf 32 mm thick decorative type of exterior grade as per detailed (S.S.R. I. No. 39.10 P. 180) G.F.	2652.00	Rgm	5013.00


27A

QTY.	PARTICULARS OF ITEMS	RATE	UNIT	AMOUNT
72.00	Item No. (22) Providing and fixing in position (as per 1868 / 1982) Alluminium sliding window of three tracks with rectangular pipe 95 x 38.10 x 0.90 mm at weight 0.637 kg/Rmt. with window frame bottom track section 92 x 31.75 x 1.30 mm at weight 1.070 kg/Rmt.. Top and side track section 92 x 31.75 x 1.30 mm at weight 0.933 kg/Rmt. The shutter should be of bearing bottom 40 x 18 x 1.25 mm at weight 0.417 kg/Rmt. Inter locking section 40 x 18 x 1.10 mm at weight 0.469 kg/Rmt. and handle and top section 40 x 18 x 1.25 mm at weight 0.417 kg/Rmt. As per detailed drawings and as directed by Engineerincharge with all necessary Aluminium sections fixtures and fastenings such as roller bearing in nylon casting and self locking catch fitted in vertical section of shutter including 5 mm thick plain glass and aluminium mosquito net shutter with stainless steel (S.S.R. I. No. 39.41 P. No. 184)	5826.00	Sqm	419472.00
3.60	Item No.(23) Providing internal cement plaster 6 mm thick in a single coat in cement mortar 1:4 without neeru finish to concrete surface in all positions including scaffolding and curing etc. complete. Spe. No. :Bd.L.1 Page No. 367 (S.S.R.I.No. 32.01, P.No. 153)	191.00	Sqm	688.00
246.75	Item No.(24) Providing internal cement plaster 12mm thick in single coat in cement mortar 1:5 without neeru finish to concrete or brick surfaces, in all positions including scaffolding and curing etc. complete. Spe. No. :Bd. L.2 Page No. 368 (S.S.R. I. No. 32.03 P. No. 153)	257.00	Sqm	63416.00
565.32	Item No.(25) Providing sand faced plaster externally in cement mortar using approved screened sand, in all positions including base coat of 15 mm thick in cement mortar 1:4 using waterproofing compound at 1 kg per cement bag curing the same for not less than 2 days and keeping the surface of the base coat rough to receive the sand faced treatment 6 to 8 mm thick in cement mortar 1:4 finishing the surface by taking out grains and curing for fourteen days scaffolding etc.complete. Spec. :Bd.L.7 Page No. 369 (S.S.R. I. No. 32.11 P. 153)	599.00	Sam	338627.00
250.35	Item No.(26) Providing and applying Two coats of wall care Putty on plastered surface and Ceiling and Walls to prepare surface even and smooth of approved make, etc complete. (S.S.R. I. No. 32.34 P. 155)	87.00	Sqm	21781.00
250.35	Item No.(27) Providing & applying washable oil-bound distemper of approved colour and shade to old & new surfaces in two coat including scaffolding, preparing the surfaces. (excluding the primer coat.) etc. complete.Spec. No. :Bd. P 5 Page No. 413 (S.S.R.I.No. 36.11, P. No. 167)	43.00	Sqm	10766.00
565.32	Item No.(28) Providing and applying two coats of exterior weather shield paint of approved manufacture and of approved colour to the plastered surfaces including cleaning ,preparing the plaster surface ,applying primer coat ,scaffolding if necessary, and watering the (S.S.R.I.No.35.26 P. No. 165)	238.00	Sqm	134547.00

QTY.	PARTICULARS OF ITEMS	RATE	UNIT	AMOUNT
1.00	Item No.(29) Providing and fixing Orissa type white glazed earthenware 575 mm water closet pan including S trap with earthenware foot rests, cast iron soil and vent pipe upto outside face of the wall 1:2:4 brick bat lime concrete bedding without flushing tank and its accessories etc. complete. Spec No. : Spec No. : Bd O 8 / Page No 406 (S.S.R. I.No. 42.30, P.No. 202)	3742.00	Each	3742.00
1.00	Item No. (30) Providing and fixing white glazed earthenware lipped flat back / corner type Urinal with PVC 5 liters flushing cistern with fittings, inlet pipe with stop tap, brackets for fixing the cistern, 32 mm diameter P.V.C. flush pipe with fitting including lead soil pipe, lead trap and soil pipe connection up to the outside face of wall. Spec. No.: Bd.V.26 Page No. 551 (S.S.R. I.No. 41.60, P.No. 198)	4448.00	Nos.	4448.00
2.00	Item No. (31) Providing and fixing 10cm C.I. Nahani Trap including C.I. grating bend and piece of C.I. pipe upto the outside face of the wall complete.) Spec. No. :Bd.V.32 Page No.567 (S.S.R.I.No. 41.80 P. No. 199)	1104.00	Nos.	2208.00
1.00	Item No. (32) Providing and fixing white glazed earthenware Wash Hand Basin of 45cm x 30cm size including cold water pillar tap/cold and hot water pillar tap brackets, rubber plugs and brass chain, stop tap and necessary pipe connection including P.V.C. waste pipe and trap up to the outside face of the wall. Making good the damaged surface, testing etc. complete. Spec. No. :Bd.V.30 Page No. 565 (S.S.R. I. No. 41.64 P. 198)	5342.00	Nos.	5342.00
5.00	Item No.(33) Providing and laying in walls/ceilings/floors 32 mm dia. medium grade having embossed as ISI Mark galvanised iron pipes of 1.63 kg/metre necessary fitting remaking good the demolished portion with filling trenches and with primer of anti-corrosive oil paint , 2 coats complete. Spec. No. : Bd V 5 Page No. 551 (D.S.R. I.No. 43.04, P.No. 208)	522.00	Rgm	2610.00
5.00	Item No.(34) Providing and laying in walls/ceilings/floors 20 mm dia. medium grade having embossed as ISI Mark galvanised iron pipes of 1.63 kg/metre necessary fitting remaking good the demolished portion with filling trenches and with primer of anti-corrosive oil paint , 2 coats complete. Spec. No. : Bd V 5 Page No. 551 (S.S.R. I.No. 43.02, P.No. 208)	380.00	Rgm	1900.00
5.00	Item No.(35) Providing and laying in walls/ceilings/floors 15 mm dia. medium grade having embossed as ISI Mark galvanised iron pipes of 1.25 kg/metre necessary fitting remaking good the demolished portion with filling trenches and with primer of anti-corrosive oil paint , 2 coats complete. Spec.No.: Bd.V.5 Page No. 551(S.S.R. I.No. 43.01, (S.S.R. I.No. 43.01, P.No. 208)	337.00	Rgm	1685.00
5.00	Item No.(36) Providing and fixing 15 mm dia. screw down bib/ stop tap of brass including necessary socket union nut complete. Spec.No.:Bd.V.8 Page No. 554 (S.S.R. I.No. 41.40, P.No. 196)	637.00	Each	3185.00

QTY.	PARTICULARS OF ITEMS	RATE	UNIT	AMOUNT
574.58	Item No.(37) Providing and laying machine cut machine Polished Kota stone flooring 25mm to 30mm thick and required width in plain/ diamond pattern on bed of 1:6 C. M. including cement float, filling joints with neat cement slurry, curing, polishing and cleaning etc. complete (S.S.R.I.No. 33.06 P. No. 156)	1217.00	Sqm	699268.00
25.36	Item No.(38) Providing and laying vitrified matt finish tiles having size 590 mm to 605 mm x to 605 mm of 8 to 10 mm thickness and confirming IS. 15622-2006 (Group Bla) of approved make, shade and pattern for flooring in required position laid on a bed of 1:4 cement morar including neat cement float, filling joints, curing and cleaning etc. complete. a) Skirting Spec. No. :Bd.M.12 Page No. 385 (S.S.R. I.No.33.43 P. No. 159)	1982.00	Sqm	50258.00
1.00	Item No.(39) Providing and fixing screw down for 32 mm dia. wheeled stop tap of brass including necessary sockets/union nut complete. Spec.No.: Bd.V.9 Page No. 555 (S.S.R. I.No. 41.46, P.No. 197)	877.00	Each	877.00
5.00	Item No.(40) Providing and fixing 100 mm dia stabiliser pipe/ P.V.C. soil vent/waste pipe and with necessary fixtures and fitting such as bends, tees, single junctions, slotted vent, clamps etc. complete. Spec.No.:As directed by Engineer in charge. (S.S.R. I.No. 42.52, P.No. 204)	735.00	Ram	3675.00
5.00	Item No.(41) Providing & constructing Brick Masonry Inspection Chamber 60cm x 45cm x 90cm including 1:4:8 cement concrete foundation 1:2:4 cement concrete channels half round G.S.W. pipes, Brick Masonry, plastering from inside and with frame fixed in cement concrete etc. complete with R.C.C. Cover. Spec.No.: Bd.V.43, Page No. 574 (S.S.R. I.No. 42.10, P.No. 200)	12348.00	Each	61740.00
2.00	Item No.(42) Providing and fixing in position UPVC ultra violet stabilized 110 mm outer diameter cowl dome confirming to I.S.-4985 including making joints with solvent cement etc. complete. Spec.No.: specifications (S.S.R. I.No. 43.25, P.No. 210)	156.00	Each	312.00
14.54	Item No. (43) Providing and laying machine cut machine polished machine cut Kota stone slabs 20 to 25 mm thick for treads and risers of steps and staircases, with rounded nosing for the treads on a bed of 1:4 cement mortar including cement float, filling joints with neat cement slurry, curing, polishing and cleaning etc. complete. Spec. No. :Bd.M.22 Page No. 300 (S.S.R. I.No.33.18 P. No. 157)	1493.00	Nos.	21708.00

QTY.	PARTICULARS OF ITEMS	RATE	UNIT	AMOUNT
28.80	Item No. (44) Providing and fixing in position powder coated aluminium louvered windows / ventilator of various sizes with powder coating as per detailed drawing and specifications including aluminium frames 80 x 38 mm x 1.22 mm box type, 5 mm thick sheet glass louvers, of approved quality etc. complete. (S.S.R. I.No.39.68 P. No. 188)	3107.00	Nos.	89482.00
641.48	Item No. (45) Providing and fixing corrugated galvanised iron sheets of 0.63mm thick (24 B.W.G.) for roofing without wind tiles including fastening with galvanised iron screws and bolts, lead and bitumen washers as per drawing etc. complete.(Weight of 5.5 kg/sq.m.). (S.S.R. I.No. 38.05 P. No. 171)	1042.00	Rgm	668424.00
9.62	Item No. (46) Providing and fabricating structural steel work in rolled sections like joists, channels, angles, tees etc. as per detailed design and drawings or as directed including cutting, fabricating, hoisting, erecting, fixing in position making riveted / bolted /welded connections without connecting plates, braces etc. and including one coat of anticorrosive paint and over it two coats of oil painting of approved quality and shade etc. complete. (S.S.R. I.No. 23.02 P. No. 129)	85585.00	Rgm	823519.00
			Total RS.	<u>6940262.08</u>


For Pawan Engineers, Latui

569

NAME OF WORK : PROPOSED CONSTRUCTION OF WARE HOUSE UNIT UNDER SMART PROJECT SCHEME
IN GUT NO. 71 OF AT BHOISMUDRA TQ LATUR AND DIST LATUR
FOR - SVR KRUSHI MITRA PRODUCER COMPANY LTD. AT AKHARWAI, TQ LATUR DIST LATUR

MEASUREMENT SHEET

S.R.	Particulars	No.	L	B	D	Qty.	Unit.
1	Excavation for Foundation in Earth, Soils of all types, sand, Gravel And Soft murum, Foundation etc. For footing column	31	1.70	2.00	1.00	105.40	
	Ramp	2	3.00	1.50	0.40	3.60	
	Steps	2	3.59	1.50	0.40	4.31	
	For Septic tank	1	4.50	2.80	1.00	12.60	
						Total	125.91 Cum
2	Excavation for foundation in hard murum etc. complet. For footing column	31	1.70	2.00	1.00	105.40	
	Ramp	2	3.00	1.50	1.00	9.00	
	For Septic tank	1	4.50	2.80	1.00	12.60	
						Total	127.00 Cum
3	Providing and laying c.c.1:3:6 for foundation and bedding etc. complete. For footing column	31	1.70	2.00	0.10	10.54	
	Ramp	2	3.00	1.50	0.10	0.90	
	Steps	2	3.59	1.50	0.10	1.08	
	For Septic tank	1	4.50	2.80	0.10	1.26	
	For Godown	1	30.02	19.14	0.10	57.46	
						Total	71.24 Cum
4	Providing and laying R.C.C. M-20 for foundation & footing etc. For footing column	31	1.40	1.70	0.60	44.27	
						Total	44.27 Cum
5	Providing and casting in situ R.C.C. M-20 for R.C.C. Column Etc Complete For Column footing to Plinth	31	0.23	0.50	2.15	7.66	
	For Column Above Plinth	29	0.23	0.50	6.00	20.01	
	For Office	2	0.23	0.50	3.00	0.69	
						Total	28.36 Cum.
6	Providing and casting in situ C.C. M-20 for R.C.C. beams and lintels etc. complete Plinth level Hort Beam	18	3.09	0.23	0.40	5.12	
		2	3.63	0.23	0.40	0.67	
	Vert Beam	6	3.23	0.23	0.40	1.78	
		2	2.86	0.23	0.40	0.53	
		1	2.73	0.23	0.40	0.25	
		1	6.23	0.23	0.40	0.57	
		1	3.00	0.23	0.40	0.28	
	For 1st Bracing Level Hort Beam	18	3.09	0.23	0.45	5.76	
		2	3.63	0.23	0.45	0.75	
	Vert Beam	6	3.23	0.23	0.45	2.01	
		2	2.86	0.23	0.45	0.59	
		1	2.73	0.23	0.45	0.28	
		1	6.23	0.23	0.45	0.64	
		1	3.00	0.23	0.45	0.31	

284

S.R.	Particulars	No.	L	B	D	Qty.	Unit.
	Add for Lintel	1	4.50	0.23	0.45	0.47	
	For 2nd Bracing Level					3.00	
	Hort Beam	18	3.09	0.23	0.45	5.76	
		2	3.63	0.23	0.45	0.75	
	Vert Beam	6	3.23	0.23	0.45	2.01	
		2	2.86	0.23	0.45	0.59	
		1	2.73	0.23	0.45	0.28	
		1	6.23	0.23	0.45	0.64	
		1	3.00	0.23	0.45	0.31	
						Total	33.35 Cum.
7	Providing and laying Cast in situ/Ready Mix cement concrete M- 20 of trap/ granite/ quartzite/ gneiss metal for R.C.C. PARDI as Steps side	4	2.00	0.10	0.30	0.24	
						Total	0.24 Cum.
8	Providing and casting in situ C.C. M-20 for R.C.C. Slabs & landings etc. complete						
	Ground Floor						
	Office Slab	1	4.13	4.96	0.15	3.07	
						Total	3.07 Cum.
9	Providing and laying Cast in situ/Ready Mix cement concrete in M-20 of trap / quartzite /granite /gneiss metal for R.C.C. Waist slab, Ground Floor						
	For Steps.	2	3.19	1.50	0.15	1.44	
	For Steps.	6x1/2	3.19	0.30	0.15	0.43	
	G.F.					Total	1.87 Cum.
10	Providing and laying Cast in situ/Ready Mix cement concrete M-20 of trap/ granite/ quartzite/ gneiss metal for R.C.C. chajja as Chajja	2	30.48	0.45	0.075	2.06	
	Ver.	2	19.60	0.45	0.075	1.32	
	G.F.					Total	3.38 Cum.
11	Providing and fixing HYSD bars for various R.C.C. works etc. complete.						
	Footing	44.27	<u>Cum.@80.0Kg/cum.</u>			3541.44	
	Column	28.36	<u>Cum.@100.0Kg/cum.</u>			2836.48	
	Beam.	33.35	<u>Cum.@100.0Kg/cum.</u>			3334.78	
	Pardi & Chajja	3.62	<u>Cum.@100.0Kg/cum.</u>			362.04	
	Slab.	3.07	<u>Cum.@100.0Kg/cum.</u>			307.27	
						Total	10382.01 Kg
						Total.	10.38 M.T.
12	Providing soling 80 mm. Dry trap metal etc. complete						
	For Below Flooring						
	For Godown	1	30.02	19.14	0.15	86.19	
						Total	86.19 Cum
13	Filling in plinth with contractors hard murum etc complet.						
	For Below Flooring						
	For Godown	1	30.02	19.14	0.60	344.75	
						Total	344.75 Cum

S.R.	Particulars	No.	L	B	D	Qty.	Unit.
14	Providing and laying second class B.B. Masonary in plinth and foundation etc For External Wall Plinth level						
	Hort Beam	18	3.09	0.23	0.55	7.04	
		2	3.63	0.23	0.55	0.92	
	Vert Beam	6	3.23	0.23	0.55	2.45	
		2	2.86	0.23	0.55	0.72	
		1	2.73	0.23	0.55	0.35	
		1	6.23	0.23	0.55	0.79	
		1	3.00	0.23	0.55	0.38	
						Total	12.64 Cum
15	Providing & laying 2nd class B.B. masonry in superstructure in C.M.1:4 prop. etc. For External Wall						
	Hort Beam	18	3.09	0.23	5.00	63.96	
		2	3.63	0.23	5.00	8.35	
	Vert Beam	6	3.23	0.23	5.00	22.29	
		2	2.86	0.23	5.00	6.58	
		1	2.73	0.23	5.00	3.14	
		1	6.23	0.23	5.00	7.16	
		1	3.00	0.23	5.00	3.45	
	Deduction For Opening						
	D	-2	0.90	0.23	2.10	-0.87	
	D1	-1	0.75	0.23	2.10	-0.36	
	W	-24	2.00	0.23	1.50	-16.56	
	V	-24	2.00	0.23	0.60	-6.62	
	RS	-4	3.00	0.23	2.40	-6.62	
	G.F.					Net	83.89 Cum
16	Providing and second class Burnt Brick masonry in cement mortar 1:4 in half brick thick wall etc complete.						
	Gents Toilet H-Wall	1	3.13	--	3.07	9.61	
		1	0.72	--	3.07	2.21	
	Deduction For Door	-1	0.75	--	2.10	-1.58	
						Total	10.24 Sqm.
17	Providing and fixing 30mm thick SOLID PANEL PVC INTERNAL DOOR SHUTTER consisting of frame made out of M.S. tubes						
		1	0.70	--	2.05	1.44	
						Total	1.44 Sqm
18	Providing and fixing collapsible steel gates in two leaves, with channel pickets, pivoted flat Staircase						
		1	3.00	--	2.40	7.20	
						Total	7.20 Sqm
19	Providing and fixing machine cut machine polished 18 mm to 20 mm thick telephone Staircase						
		9	3.59	0.30	--	9.69	
		9	3.59	--	0.15	4.85	
						Total	14.54 Sqm
20	Providing and fixing M40 grade thick vibrated pull cast or similar type concrete GROUND FLOOR						
	D1	1	5.10	--	--	5.10	
	D	1	6.80	--	--	6.80	
						Total	11.90 Rgm

S.R.	Particulars	No.	L	B	D	Qty.	Unit.
21	Providing and fixing solid core flush door shutter in single leaf 32 mm thick decorative type of exterior grade as per detailed D	1	0.90	--	2.10	1.89	
					Total	<u>1.89</u>	Sqm
22	Providing and fixing in position (as per 1868 / 1982) Alluminium sliding window of three GROUND FLOOR W	24	2.00	--	1.50	72.00	
						<u>72.00</u>	Sqm
23	Providing internal cement plaster 6 mm. thick in a single coat in cement mortar 1:4 without neeru finish to concrete surface in all For Ceiling Plaster Steps Side	2	2.00	0.90	--	3.60	
					Total	<u>3.60</u>	Sqm
24	Providing internal cement plaster 12mm thick in single coats in cement mortar 1:5 Wall	2	30.02	--	3.45	207.14	
		2	19.14	--	3.45	132.07	
		2	3.09	--	3.45	21.32	
		2	3.07	--	3.45	21.18	
	Deduction For Opening						
	D	-2	0.90	--	2.10	-3.78	
	D1	-1	0.75	--	2.10	-1.58	
	W	-24	2.00	--	1.50	-72.00	
	V	-24	2.00	--	0.60	-28.80	
	RS	-4	3.00	--	2.40	-28.80	
	G.F.				Net	<u>246.75</u>	Sqm
25	Providing sand faced plaster externally in c.m. using Kharasalia/Kasaba or similar type of 15mm thick in c.m. 1:4 Ground Floor	2	30.48	--	6.00	365.76	
		2	19.60	--	6.00	235.20	
	For Offset	29x2	0.27	--	6.00	93.96	
	Deduction For Opening						
	W	-24	2.00	--	1.50	-72.00	
	V	-24	2.00	--	0.60	-28.80	
	RS	-4	3.00	--	2.40	-28.80	
	G.F.				Net	<u>565.32</u>	Sqm
26	Providing and applying Two coats of wall care Putty on plastered surface and Ceiling and Walls to prepare surface even and G.F.						
					Qty As Per 6mm & 12mm plaster	<u>250.35</u>	Sqm
27	Providing washable oil bound distemper in two coats etc, complete						
					Qty as per It. No.	<u>250.35</u>	Sqm.
28	Providing and applying two coats of exterior weather shield paint of approved						
					Qty as per It. No.	<u>565.32</u>	Sqm.
29	Providing and fixing W.C.pan W/C	1	--	--	--	1.00	
						<u>1.00</u>	Nos.

S.R.	Particulars	No.	L	B	D	Qty.	Unit.
30	Providing and fixing white glazed earthenware half stall type urinals without cistern Including lead soil pipe,	1	--	--	--	1.00	
						Total	1.00 Nos.
31	Providing and fixing 10 cm. castiron Nahani Trap complete	2	--	--	--	2.00	
						Total	2.00 Nos.
32	Providing and fixing white glazed earthenware wash Hand Basin etc.comp.	1	--	--	--	1.00	
						Total	1.00 Nos.
33	Providing 32 mm.dia G.I. pipe etc.	5	--	--	--	5.00	Rgm.
34	Providing 20 mm.dia G.I. pipe etc.	5	--	--	--	5.00	Rgm.
35	Providing 15 mm.dia G.I. pipe etc.	5	--	--	--	5.00	Rgm.
36	Providing and fixing 15 mm dia screw down bib stop etc.	5	--	--	--	5.00	
						Total	5.00 Nos.
37	Providing and laying machine cut machine Polished Kota stone flooring 25mm to 30mm Below Stair	1	30.02	19.14	--	574.58	
		G.F.				Total	574.58 Sqm.
38	Providing and laying vitirified Matt premium quality finish decorative type Below Stair	2	30.02	--	0.10	6.00	
		2	19.14	--	0.10	3.83	
	Toilet	2	2.10	--	2.10	8.82	
		2	1.20	--	2.10	5.04	
	Deduction For Opening						
	D	-1	0.90	--	0.10	0.09	
	D1	-1	0.75	--	2.10	1.58	
		G.F.				Total	25.36 Sqm.
39	Providing 32 mm dia wheel stop etc.	1	--	--	--	1.00	Nos.
40	Providing 110 mm dia UPVC soil vent pipe	1	5.00	--	--	5.00	Rgm
41	Providing 60x45 cm B.B. masonry inspection chamber	5	--	--	--	5.00	Nos.
42	Providing and fixing cowl dome etc.	2	--	--	--	2.00	Nos.
43	Providing and laying machine cut machine polished machine cut Kota stone slabs 20 to 25 mm thick for treads and risers of steps Front Steps	9	3.59	0.30	--	9.69	
		9	3.59	--	0.15	4.85	
						Total	14.54 Sqm.

S.R.	Particulars	No.	L	B	D	Qty.	Unit.
44	Providing and fixing in position powder coated aluminium louvered windows / For Ventilator	24	2.00	--	0.60	28.80	
						Total	28.80 Sqm.
45	Providing and fixing corrugated galvanised iron sheets of 0.63mm thick (24 B.W.G.) for Roofing	1	30.48	19.92	--	607.16	
	Front And Back Side	2	17.16	--	--	34.32	
						Total	641.48 Sqm
46	Providing and fabricating structural steel work in rolled sections like joists, channels, Staircase	641.48			Sqm/15kg/Sqm	9622.22	
						Total	9622.22 KG
						Total	9.62 MT


Pawan
For Pawan Engineers, Latul

LEAD CHARGES CALCULATION

(AS PER STATE e- SSR 2021-22)

Sr.	Material	Location of	Lead in KM.	Lead	Pay load	Lead	Net Lead	Unit
1	2	3	4	5	6	7	8	9
1	Metal 40mm. Size/ Stone	Local	3.00	1154.54	6.00	192.42	192.42	/Cum.
2	Metal below 40mm. Size	Local	3.00	1154.54	5.75	200.79	200.79	/Cum.
3	Sand	Pohner	60.00	4925.75	5.75	856.65	856.65	/Cum.
4	Hard Murum	Gairan	3.50	1196.63	6.00	199.44	199.44	/Cum.
5	Cement	--						
6	Bricks	--						/1000Nos.
7	Steel	--						/1000Nos.

Royalty charges 141.34 /Cum.


Pavan Engineers, Lalai

290

581

RUCTION OF WARE HOUSE UNIT UNDER SMART PROJECT SCHEME IN GUT NO. 71 OF AT BHOIS
RATE ANALYSIS STATE e-D.S.R (2021-22)

1	Excavation for foundation in earth, soils of all types, sand, gravel (S.S.R. I.No. 21.02 P.No. 115)	193.00
	(D) Sub Total	<u>193.00</u>
	(E) Add 4% For Municipal Council Areas	7.72
	Total Rs.	<u>193.00</u> Cum.
2	Excavation for foundation in hard murum including removing the (S.S.R. I.No. 21.06 P.No. 115)	212.00
	(D) Sub Total	<u>212.00</u>
	(E) Add 4% For Municipal Council Areas	8.48
	Total Rs.	<u>212.00</u> Cum.
3	M-10 for foundation and bedding etc. (S. e-S.S.R. I.No. 24.01 P.No. 131)	
	(A) Rate as per SSR 2021-22	5538.00
	(D) Sub Total	<u>5538.00</u>
	(E) Add 4% For Municipal Council Areas	221.52
	(F) Add Transportation Of Material	
	Add lead for sand 0.47 cum/cum @ Rs. 856.65/cum.	402.63
	Add lead for 40 mm metal 0.175 cum/cum @ Rs.192.42/cum.	134.69
	Add lead for 20 mm metal 0.24 cum/cum @ Rs.200.79/cum.	48.19
	Total Rs.	<u>5538.00</u> Cum.
4	M-20 for R.C.C.Footing etc. (S- S.S.R. I.No. 25.11, P.No. 133)	
	(A) Rate as per SSR 2021-22	6666.00
	(D) Sub Total	<u>6666.00</u>
	(E) Add 4% For Municipal Council Areas	266.64
	(F) Add Transportation Of Material	
	Add lead for sand 0.425 cum/cum @ Rs.856.65/cum.	364.08
	Add lead for 20 mm metal 0.57 cum/cum @ Rs.200.79/cum.	114.45
	Add lead for 10/12 mm metal 0.28 cum/cum @	56.22
	Total Rs.	<u>6666.00</u> Cum.
5	Providing and laying Cast in situ/Ready Mix cement concrete M- 20 of trap / granite /quartzite/ gneiss metal for R.C.C. columns (S.S.R. I. No. 25.31 P. No. 134)	
	(A) Rate as per SSR 2021-22	12987.00
	(D) Sub Total	<u>12987.00</u>
	(E) Add 4% For Municipal Council Areas	519.48
	(F) Add Transportation Of Material	
	Add lead for sand 0.425 cum/cum @ Rs.856.65/cum.	364.08
	Add lead for 20 mm metal 0.57 cum/cum @ Rs.200.79/cum.	114.45
	Add lead for 10/12 mm metal 0.28 cum/cum @	56.22
	Total Rs.	<u>12987.00</u> PerCum.
6	Providing and laying Cast in situ/Ready R.C.C. beams and lintels as per detailed designs and drawings or as directed (S.S.R.I. No. 25.50 P. 135)	
	(A) Rate as per SSR 2021-22	11483.00
	(D) Sub Total	<u>11483.00</u>
	(E) Add 4% For Municipal Council Areas	459.32
	(F) Add Transportation Of Material	
	Add lead for sand 0.425 cum/cum @ Rs.856.65/cum.	364.08
	Add lead for 20 mm metal 0.57 cum/cum @ Rs.200.79/cum.	114.45
	Add lead for 10/12 mm metal 0.28 cum/cum @	56.22
	Total Rs.	<u>11483.00</u> PerCum.

7	Providing and laying Cast in situ/Ready Mix cement concrete M-20 of trap/ granite/ quartzite/ gneiss metal for R.C.C. Pardi as (S.S.R. I.No. 26.17, P.No. 137)	
	(A) Rate as per SSR 2021-22	14692.00
	(D) Sub Total	<u>14692.00</u>
	(E) Add 4% For Municipal Council Areas	587.68
	(F) Add Transportation Of Material	
	Add lead for sand 0.425 cum/cum @ Rs.856.65/cum.	364.08
	Add lead for 20 mm metal 0.57 cum/cum @ Rs.200.79/cum.	114.45
	Add lead for 10/12 mm metal 0.28 cum/cum @ Rs.200.79/cum	56.22
	Total Rs. <u>14692.00</u>	PerCum.
8	Providing and laying Cast in situ/Ready Mix cement concrete M-20 of trap/ granite/ quartzite/ gneiss metal for R.C.C. slabs and (S.S.R. I. No. 25.70 P. No. 135)	
	(A) Rate as per SSR 2021-22	13943.00
	(D) Sub Total	<u>13943.00</u>
	(E) Add 4% For Municipal Council Areas	557.72
	(F) Add Transportation Of Material	
	Add lead for sand 0.425 cum/cum @ Rs.856.65/cum.	364.08
	Add lead for 20 mm metal 0.57 cum/cum @ Rs.200.79/cum.	114.45
	Add lead for 10/12 mm metal 0.28 cum/cum @ Rs.200.79/cum	56.22
	Total Rs. <u>13943.00</u>	PerCum.
9	Providing and laying Cast in situ/Ready Mix cement concrete in M-20 of trap / quartzite /granite /gneiss metal for R.C.C. Waist (S.S.R.I.No. 26.25, P.No. 138)	
	(A) Rate as per SSR 2021-22	13137.00
	(D) Sub Total	<u>13137.00</u>
	(E) Add 4% For Municipal Council Areas	525.48
	(F) Add Transportation Of Material	
	Add lead for sand 0.425 cum/cum @ Rs.856.65/cum.	364.08
	Add lead for 20 mm metal 0.57 cum/cum @ Rs.200.79/cum.	114.45
	Add lead for 10/12 mm metal 0.28 cum/cum @	56.22
	Total Rs. <u>13137.00</u>	PerCum.
10	Providing and laying Cast in situ/Ready Mix cement concrete M-20 of trap/ granite/ quartzite/ gneiss metal for R.C.C. chajja as per detailed (S.S.R.I.No. 26.05, P.No. 137)	
	(A) Rate as per SSR 2021-22	13111.00
	(D) Sub Total	<u>13111.00</u>
	(E) Add 4% For Municipal Council Areas	524.44
	(F) Add Transportation Of Material	
	Add lead for sand 0.425 cum/cum @ Rs.856.65/cum.	364.08
	Add lead for 20 mm metal 0.57 cum/cum @ Rs.200.79/cum.	114.45
	Add lead for 10/12 mm metal 0.28 cum/cum @	56.22
	Total Rs. <u>13111.00</u>	PerCum.
11	Providing and fixing in position TMT - FE - 500 bar reinforcement of various diameters for R.C.C. pile caps, footings, foundations, (S.S.R. I.No.26.33, P.No. 139)	
	(A) Rate as per SSR 2021-22	71778.00
		Sub Total <u>71778.00</u>
	Add 4% For Municipal Council Areas	2871.12
	Total Rs. <u>71778.00</u>	PerM.T
12	Providing and laying using 80mm. size trap metal in 15cm. layer (S.S.R. I.No.21.40 P.No. 118)	
	(A) Rate as per SSR 2021-22	1322.00
	(D) Sub Total	<u>1322.00</u>
	(E) Add 4% For Municipal Council Areas	52.88
	(F) Add Transportation Of Material	
	Add lead for metal 1.00 cum/cum @ Rs.192.42/cum.	192.42
	Total Rs. <u>1322.00</u>	Cum.

13	Filling in plinth and floors with contractors material/brought from outside and approved by Engineer incharge in layers of (S.S.R. I.No. 21.37, P.No. 117) (A) Rate as per SSR 2021-22 (D) Sub Total (E) Add 4% For Municipal Council Areas (F) Add Transportation Of Material Add lead for Murum 1.00 cum/cum @ Rs. 196.15/cum.	550.00 <hr/> 550.00 <hr/> 22.00 <hr/> 196.15 <hr/> 550.00 Cum.
14	Providing second class Burnt Brick masonry with conventional/ I.S. type bricks in cement mortar 1:6 in foundations and plinth (S.S.R. I. No. 27.01 No. 144) (A) Rate as per SSR 2021-22 (D) Sub Total (E) Add 4% For Municipal Council Areas (F) Add Transportation Of Material Add lead for sand 0.32 cum/cum @ Rs.856.65/cum.	7343.00 <hr/> 7343.00 <hr/> 293.72 <hr/> 274.13 <hr/> Total Rs. 7343.00 PerCum.
15	Providing second class Burnt Brick masonry with conventional/ I.S. type bricks in cement mortar 1:6 in superstructure (S.S.R.I.No. 27.05, P.No. 144) (A) Rate as per SSR 2021-22 (D) Sub Total (E) Add 4% For Municipal Council Areas (F) Add Transportation Of Material Add lead for sand 0.32 cum/cum @ Rs.856.65/cum.	7570.00 <hr/> 7570.00 <hr/> 302.80 <hr/> 274.13 <hr/> Total Rs. 7570.00 PerCum.
16	Providing B.B. Masonry in Half Brick Wall etc. (S.S.R. I.No. 27.06, P.No. 144) (A) Rate as per SSR 2021-22 (D) Sub Total (E) Add 4% For Municipal Council Areas (F) Add Transportation Of Material Add lead for sand 0.034 cum/cum @ Rs.856.65/cum.	1023.00 <hr/> 1023.00 <hr/> 40.92 <hr/> 29.13 <hr/> Total Rs. 1023.00 Sqm.
17	Providing and fixing 30mm thick SOLID PANEL PVC INTERNAL DOOR SHUTTER consisting of frame made out of M.S. tubes of 19 (S.S.R. I. No. 39.81 P. No. 190) (A) Rate as per SSR 2021-22 Sub Total Add 4% For Municipal Council Areas	5868.00 <hr/> 5868.00 <hr/> 234.72 <hr/> Total Rs. 5868.00 PerSqm.
18	Providing and fixing collapsible steel gate in one / two leaves with hot rolled vertical channels of 18 x 9 x 3 mm minimum size, (S.S.R. I. No. 39.26 P. No. 182) (A) Rate as per SSR 2021-22 Sub Total Add 4% For Municipal Council Areas	3736.00 <hr/> 3736.00 <hr/> 149.44 <hr/> Total Rs. 3736.00 PerSqm.
19	Providing and fixing machine cut machine polished 18 mm to 20 mm thick telephone black / Amba White / Cat bary brown / (S.S.R.I.No. 33.35, P. No. 158) (A) Rate as per SSR 2021-22 (D) Sub Total (E) Add 4% For Municipal Council Areas (F) Add Transportation Of Material Add lead for sand 0.022 cum/cum @ Rs.856.65/cum.	4138.00 <hr/> 4138.00 <hr/> 165.52 <hr/> 18.85 <hr/> Total Rs. 4138.00 Sqm.

20	Providing and fixing M40 grade thick vibrated pull cast or similar type concrete frame with chamfer conforming to I.S. 65241983 (S.S.R. I. No. 39.57 P. 187)	977.00	
	Sub Total	977.00	
	Add 4% For Municipal Council Areas	39.08	
	Total Rs.	977.00	Rgm
21	Providing and fixing solid core flush door shutter commercial in (S.S.R. I. No. 39.10 P. 180) (A) Rate as per SSR 2021-22	2652.00	
	Sub Total	2652.00	
	Add 4% For Municipal Council Areas	106.08	
	Total Rs.	2652.00	Sqm
22	Providing and fixing in position (as per 1868 / 1982) Alluminium sliding window of three tracks with rectangular pipe 95 x 38.10 x (S.S.R. I. No. 39.41 P. No. 184) (A) Rate as per SSR 2021-22	5826.00	
	Sub Total	5826.00	
	Add 4% For Municipal Council Areas	233.04	
	Total Rs.	5826.00	Sqm
23	Providing internal cement plaster 6 mm thick in a single coat in cement mortar 1:4 without neeru finish to concrete surface in all (S.S.R.I.No. 32.01, P.No. 153) (A) Rate as per SSR 2021-22 (D) Sub Total (E) Add 4% For Municipal Council Areas (F) Add Transportation Of Material Add lead for sand 0.0076 cum/cum @ Rs.856.65/cum.	191.00 191.00 7.64 6.51	
	Total Rs.	191.00	PerSqm.
24	Providing internal cement plaster 12mm thick in single coat in cement mortar 1:5 without neeru finish to concrete or brick (S.S.R. I. No. 32.03 P. No. 153) (A) Rate as per SSR 2021-22 (D) Sub Total (E) Add 4% For Municipal Council Areas (F) Add Transportation Of Material Add lead for sand 0.015 cum/cum @ Rs.856.65/cum.	257.00 257.00 10.28 12.85	
	Total Rs.	257.00	PerSqm.
25	Providing sand faced plaster externally in cement mortar using approved screened sand, in all positions including base coat of 15 (S.S.R. I. No. 32.11 P. 153) (A) Rate as per SSR 2021-22 (D) Sub Total (E) Add 4% For Municipal Council Areas (F) Add Transportation Of Material Add lead for sand 0.033 cum/cum @ Rs.856.65/cum.	599.00 599.00 23.96 28.27	
	Total Rs.	599.00	PerSqm.
26	Providing and applying Two coats of wall care Putty on plastered (S.S.R. I. No. 32.34 P. 155) (A) Rate as per SSR 2021-22	87.00	
	Sub Total	87.00	
	Add 4% For Municipal Council Areas	3.48	
	Total Rs.	87.00	PerSqm.

27	Providing & applying washable oil-bound distemper of (S.S.R.I.No. 36.11, P. No. 167) (A) Rate as per SSR 2021-22	43.00	
	Sub Total	<u>43.00</u>	
	Add 4% For Municipal Council Areas	1.72	
	Total Rs.	<u>43.00</u>	PerSqm.
28	Providing and applying two coats of exterior weather shield paint of approved manufacture and of approved colour to the (S.S.R.I.No.35.26 P. No. 165) (A) Rate as per SSR 2021-22	238.00	
	Sub Total	<u>238.00</u>	
	Add 4% For Municipal Council Areas	9.52	
	Total Rs.	<u>238.00</u>	Sqm
29	Providing and fixing Orissa type white glazed earthenware 575 mm water closet pan including S trap with earthenware foot (S.S.R. I.No. 42.30, P.No. 202) (A) Rate as per SSR 2021-22	3742.00	
	Sub Total	<u>3742.00</u>	
	Add 4% For Municipal Council Areas	149.68	
	Total Rs.	<u>3742.00</u>	Each
30	Providing and fixing white glazed earthenware lipped flat back / corner type Urinal with PVC 5 liters flushing cistern with fittings, (S.S.R. I.No. 41.60, P.No. 198) (A) Rate as per SSR 2021-22	4448.00	
	Sub Total	<u>4448.00</u>	
	Add 4% For Municipal Council Areas	177.92	
	Total Rs.	<u>4448.00</u>	Nos.
31	Providing and fixing 10cm C.I. Nahani Trap including C.I. grating bend and piece of C.I. pipe upto the outside face of the wall (S.S.R.I.No. 41.80 P. No. 199) (A) Rate as per SSR 2021-22	1104.00	
	Sub Total	<u>1104.00</u>	
	Add 4% For Municipal Council Areas	44.16	
	Total Rs.	<u>1104.00</u>	Nos.
32	Providing and fixing white glazed earthenware Wash Hand Basin of 45cm x 30cm size including cold water pillar tap/cold and (S.S.R. I. No. 41.64 P. 198) (A) Rate as per SSR 2021-22	5342.00	
	Sub Total	<u>5342.00</u>	
	Add 4% For Municipal Council Areas	213.68	
	Total Rs.	<u>5342.00</u>	Nos.
33	Providing and laying in walls/ceilings/floors 32 mm dia. medium (D.S.R. I.No. 43.04, P.No. 208) (A) Rate as per SSR 2021-22	522.00	
	Sub Total	<u>522.00</u>	
	Add 4% For Municipal Council Areas	20.88	
	Total Rs.	<u>522.00</u>	Rgm.
34	Providing and laying in walls/ceilings/floors 20 mm dia. medium (S.S.R. I.No. 43.02, P.No. 208) (A) Rate as per SSR 2021-22	380.00	
	Sub Total	<u>380.00</u>	
	Add 4% For Municipal Council Areas	15.20	
	Total Rs.	<u>380.00</u>	PerRgm

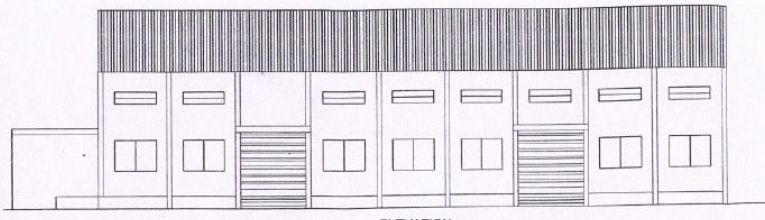
35	Providing and laying in walls/ceilings/floors 15 mm dia. medium grade having embossed as ISI Mark galvanised iron pipes of 1.25 (S.S.R. I.No. 43.01, P.No. 208)	337.00	
	Sub Total	<u>337.00</u>	
	Add 4% For Municipal Council Areas	13.48	
	Total Rs.	<u>337.00</u>	PerRgm
36	Providing and fixing 15 mm dia. screw down bib/ stop tap of (S.S.R. I.No. 41.40, P.No. 196) (A) Rate as per SSR 2021-22	637.00	
	Sub Total	<u>637.00</u>	
	Add 4% For Municipal Council Areas	25.48	
	Total Rs.	<u>637.00</u>	Nos
37	Providing and laying vitrified matt finish tiles having size 590 mm to 605 mm x to 605 mm of 8 to 10 mm thickness and (S.S.R.I.No.33.42 P. No. 159) (A) Rate as per SSR 2021-22 (D) Sub Total (E) Add 4% For Municipal Council Areas (F) Add Transportation Of Material Add lead for sand 0.022 cum/cum @ Rs.856.65/cum.	1579.00	
	Sub Total	<u>1579.00</u>	
	Add 4% For Municipal Council Areas	63.16	
	Add Transportation Of Material	18.85	
	Total Rs.	<u>1579.00</u>	PerSq.m.
38	Providing and laying vitrified matt finish tiles having size 590 mm to 605 mm x to 605 mm of 8 to 10 mm thickness and (S.S.R. I.No.33.43 P. No. 159) (A) Rate as per SSR 2021-22 (D) Sub Total (E) Add 4% For Municipal Council Areas (F) Add Transportation Of Material Add lead for sand 0.022 cum/cum @ Rs.856.65/cum.	1982.00	
	Sub Total	<u>1982.00</u>	
	Add 4% For Municipal Council Areas	79.28	
	Add Transportation Of Material	18.85	
	Total Rs.	<u>1982.00</u>	PerSq.m.
39	Providing and fixing screw down for 32 mm dia. wheeled stop tap of brass including necessary sockets/union nut (S.S.R. I.No. 41.46, P.No. 197) (A) Rate as per SSR 2021-22	877.00	
	Sub Total	<u>877.00</u>	
	Add 4% For Municipal Council Areas	35.08	
	Total Rs.	<u>877.00</u>	Nos
40	Providing and fixing 100 mm dia stabiliser pipe/ P.V.C. soil vent/waste pipe and with necessary fixtures and fitting such as (S.S.R. I.No. 42.52, P.No. 204) (A) Rate as per SSR 2021-22	735.00	
	Sub Total	<u>735.00</u>	
	Add 4% For Municipal Council Areas	29.40	
	Total Rs.	<u>735.00</u>	Rgm
41	Providing & constructing Brick Masonry Inspection Chamber 60cm x 45cm x 90cm including 1:4:8 cement concrete foundation (S.S.R. I.No. 42.10, P.No. 200) (A) Rate as per SSR 2021-22	12348.00	
	Sub Total	<u>12348.00</u>	
	Add 4% For Municipal Council Areas	493.92	
	Total Rs.	<u>12348.00</u>	Nos.
42	Providing and fixing in position UPVC ultra violet stabilized 110 mm outer diameter cow! dome conforming to I.S.-4985 including (S.S.R. I.No. 43.25, P.No. 210) (A) Rate as per SSR 2021-22	156.00	
	Sub Total	<u>156.00</u>	
	Add 4% For Municipal Council Areas	6.24	
	Total Rs.	<u>156.00</u>	Nos.

43	Providing and laying machine cut machine polished machine cut Kota (S.S.R. I.No.33.18 P. No. 157)	
	(A) Rate as per SSR 2021-22	1493.00
	(D) Sub Total	<u>1493.00</u>
	(E) Add 4% For Municipal Council Areas	59.72
	(F) Add Transportation Of Material	
	Add lead for sand 0.022 cum/cum @ Rs.856.65/cum.	18.85
	Total Rs.	<u>1493.00</u> PerSqm.
44	Providing and fixing in position powder coated aluminium louvered windows / ventilator of various sizes with powder coating as per (S.S.R. I.No.39.68 P. No. 188)	
	(A) Rate as per SSR 2021-22	3107.00
	(D) Sub Total	<u>3107.00</u>
	(E) Add 4% For Municipal Council Areas	124.28
	Total Rs.	<u>3107.00</u> PerSqm.
45	Providing and fixing corrugated galvanised iron sheets of 0.63mm thick (24 B.W.G.) for roofing without wind tiles including fastening (S.S.R. I.No. 38.05 P. No. 171)	
	(A) Rate as per SSR 2021-22	1042.00
	(D) Sub Total	<u>1042.00</u>
	(E) Add 4% For Municipal Council Areas	41.68
	Total Rs.	<u>1042.00</u> PerRgm.
46	Providing and fabricating structural steel work in rolled sections like joists, channels, angles, tees etc. as per detailed design and (S.S.R. I.No. 23.02 P. No. 129)	
	(A) Rate as per SSR 2021-22	85585.00
	(D) Sub Total	<u>85585.00</u>
	(E) Add 4% For Municipal Council Areas	3423.40
	Total Rs.	<u>85585.00</u> MT

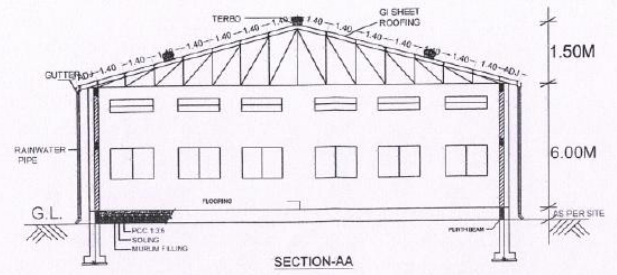

For Pawan Engineers, Latu

597

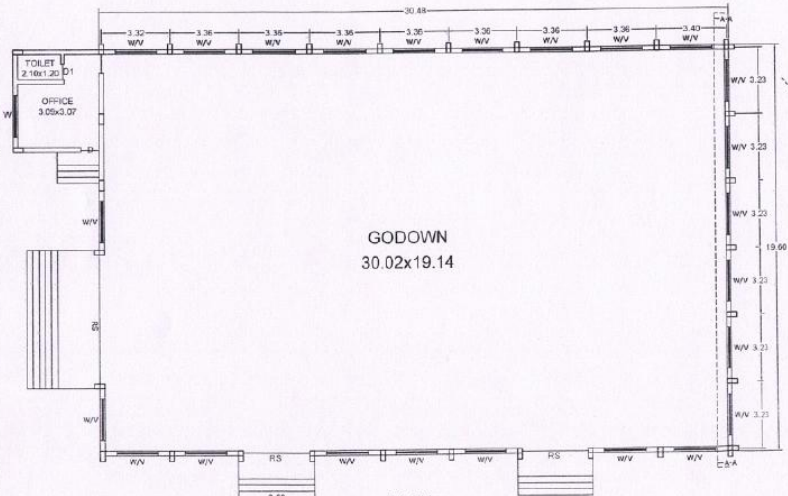
298



ELEVATION

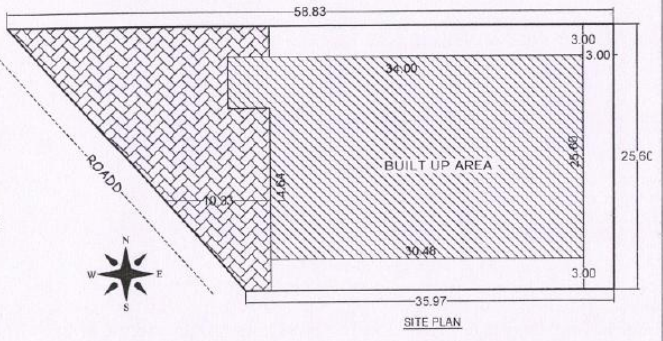


SECTION-AA



PLAN

SCALE - 1:200



SITE PLAN

AREA STATEMENTS		NAME OF WORK : PROPOSED CONSTRUCTION OF WARE HOUSE UNIT UNDER SMART PROJECT SCHEME IN GUT NO. 71 OF AT BHOISMUDRA TO LATUR AND DIST LATUR
Total Site Area	1213.44 SQM	
Prop. Godown Area	597.40 Sqm.	
SCHEDULE OF OPENING		
1.	RS 3.00 X 2.40	ROULLING.
2.	V 3.00X 0.80	VENTIL.
3.	W 2.00 X 1.50	WINDOW
4.	D 0.90 X 2.10	
5.	D1 0.75 X 2.10	
		OWNER-

For Pawan Engineers, Latu

DETAILED ESTIMATE
FOR

NAME OF WORK : PROPOSED CONSTRUCTION OF
WEIGHT SCALE BOTTOM UNIT UNDER SMART PROJECT
SCHEME IN GUT NO. 71 OF AT BHOISMUDRA TQ LATUR
AND DIST LATUR

FOR - SVR KRUSHI MITRA PRODUCER COMPANY LTD. AT AKHARWAI, TQ LATUR

ESTIMATED COST RS.


4.88 LAKH

NAME OF WORK : PROPOSED CONSTRUCTION OF WEIGHT SCALE BOTTOM UNIT UNDER SMART
PROJECT SCHEME IN GUT NO. 71 OF AT BHOISMUDRA TQ LATUR AND DIST LATUR

PROPOSED UNIT- SVR KRUSHI MITRA PRODUCER COMPANY LTD.

GENERAL ABSTRACT

Cost of Work	Rs.	433712.00
	Total Rs.	<u>433712.00</u>
Add 12% for GST	Rs.	52046.00
Add L/s for Contingencies	Rs.	2000.00
	Grand Total Rs.	<u>487758.00</u>


For Pawan Engineers, Latur

Pawan Engineers
Dev Tower Opp. Tahsil Office
Latur -413531 Ph.245297

NAME OF WORK : PROPOSED CONSTRUCTION OF WEIGHT SCALE BOTTOM UNIT UNDER SMART PROJECT
SCHEME IN GUT NO. 71 OF AT BHOISMUDRA TQ LATUR AND DIST LATUR

ABSTRACT SHEET


QTY.	PARTICULARS OF ITEMS	RATE	UNIT	AMOUNT
5.85	<p>Item No.(1) Excavation for foundation in earth, soils of all types, sand, gravel and soft murum, including removing the excavated material upto a distance of 50 metres beyond the building area and stacking and spreading as directed, dewatering, preparing the bed for the foundation and necessary back filling, ramming, watering including shoring and strutting etc. complete. (Lift from 1.5m to 3.0m) By Mechanical Means (S.S.R. I.No. 21.02 P.No. 115)</p>	193.00	Cum	1130.00
4.05	<p>Item No.(2) Excavation for foundation in hard murum including removing the excavated material upto distance of 50 metres beyond the building area and stacking and spreading as directed, dewatering, preparing the bed for the foundation and necessary back filling, ramming, watering including shoring and strutting etc. complete. (Lift upto 1.50 m) By Mechanical Means (S.S.R. I.No. 21.06 P.No. 115)</p>	212.00	Cum	859.00
2.16	<p>Item No.(3) Providing and laying in situ, cement concrete M-10/ 1:3:6 of trap/ granite/ quartzite/ gneiss metal for foundation and bedding including dewatering, formwork, compacting, roughening them if special finish is to be provided, finishing if required, and curring etc. complete. Spec. No. : Bd.E.1 Page No. 287 (S. e-S.S.R. I.No. 24.01 P.No. 131)</p>	5538.00	Cum	11963.00
2.59	<p>Item No.(4) Providing and laying in situ cement concrete M-20 of trap / granite /quartzite/ gneiss metal for R.C.C. work in undations like raft, strip foundations, grillage and footings of R.C.C. columns and steel stanchions etc. including bailing out water, formwork, cover blocks compaction and curing roughening the surface if special finish is to be provided (Excluding reinforcement and structural steel) etc. etc. complete, With fully automatic micro processor based PLC with SCADA enabled reversible drum type (S- S.S.R. I.No. 25.11, P.No. 133)</p>	6666.00	Cum	17279.00
2.24	<p>Item No.(5) Providing and laying Cast in situ/Ready Mix cement concrete M- 20 of trap / granite /quartzite/ gneiss metal for R.C.C. columns as per detailed designs and drawing or as directed including centering, formwork, cover blocks, laying / pumping, compaction finishing the formed surfaces with cement mortar 1:3 of sufficient minimum thickness to give a smooth and even surface or roughening if special finish is to be provided and curing etc.complete, (Excluding reinforcement and structural steel). with fully automatic micro processor based PLC with SCADA enabled reversible Drum Type mixer/ concrete Batch mix plant (Pan mixer) etc. complete. With natural sand/V.S.I. quality Artificial Sand Spec. No. : Bd.F.5 Page No. 200 and 207, Page No. 20 (S.S.R. I No. 25.31 P. No. 134)</p>	12987.00	Cum	29034.00

QTY.	PARTICULARS OF ITEMS	RATE	UNIT	AMOUNT
3.74	<p>Item No.(6) Providing and laying Cast in situ/Ready Mix cement concrete M- 20 of trap / granite /quartzite/ gneiss metal for R.C.C. beams and lintels as per detailed designs and drawings or as directed including centering, formwork, cover blocks, laying/pumping, compaction and roughening the surface if special finish is to be provided and curing etc. complete. (Excluding reinforcement and structural steel). with fully automatic micro processor based PLC with SCADA enabled reversible Drum Type mixer/ concrete Batch mix plant (Pan mixer) etc. complete. With natural sand/V.S.I. quality Artificial Sand Spec. No. : Bd.F.6 (S.S.R.I. No. 25.50 P. 135)</p>	11483.00	Cum.	42984.00
0.07	<p>Item No.(7) Providing and laying Cast in situ/Ready Mix cement concrete M-20 of trap/ granite/ quartzite/ gneiss metal for R.C.C. chajja as per detailed design and drawings including steel centering, formwork, cover blocks compacting , curing , finishing and roughening the surface if special finish is to be provided and curing complete. (Excluding reinforcement and structural steel).with fully automatic micro processor based PLC with SCADA enabled reversible Drum Type mixer/ concrete Batch mix plant (Pan mixer) etc. complete. With fine aggregate (Natural Sand / Crushed sand VSI Grade finely washed etc) (S.S.R.I.No. 26.05, P.No. 137)</p>	13111.00	Cum	885.00
0.57	<p>Item No.(8) Providing and fixing in position TMT - FE - 500 bar reinforcement of various diameters for R.C.C. pile caps, footings, foundations, slabs, beams columns, canopies, staircase, newels, chajjas, lintels pardis, copings, fins, arches etc. as per detailed designs, drawings and schedules. including cutting, bending, hooking the bars, binding with wires or tack welding and supporting as required complete. Spec No. : Bd.F.17 Page No. 205 (S.S.R. I.No.26.33, P.No. 139)</p>	71778.00	M.T.	40633.00
2.52	<p>Item No.(9) Providing soling using 80mm. size trap metal in 15cm. layer including filling voids with crused sand/grit, ramming, watering etc. complete. Spec. no. As directed by Engineer in charge . (S.S.R. I.No.21.40 P.No. 118)</p>	1322.00	Cum	3332.00
7.56	<p>Item No.(10) Filling in plinth and floors with contractors material/brought from outside and approved by Engineer incharge in layers of 15cm. To 20cm. including watering and compaction etc. complete. Spec. No.: Bd.A. 11/Page No. 263 Spec. No. : Bd A 11 Page No. 263 (S.S.R. I.No. 21.37, P.No. 117)</p>	550.00	Cum	4158.00
1.60	<p>Item No.(11) Providing second class Burnt Brick masonry with conventional/ I.S. type bricks in cement mortar 1:6 in foundations and plinth of inner walls/ in plinth external walls including bailing out water manually , striking joints on unexposed faces, raking out joints on exposed faces and watering etc. Complete. Spec. No. : Bd.G. 1 Page No. (S.S.R. I. No. 27.01 No. 144)</p>	7343.00	Cum	11781.00

QTY.	PARTICULARS OF ITEMS	RATE	UNIT	AMOUNT
10.47	Item No.(12) Providing second class Burnt Brick masonry with conventional/ I.S. type bricks in cement mortar 1:6 in superstructure including striking joints, raking out joints, watering and scaffolding etc. Complete Spe. No. :Bd.G.5 (S.S.R.I.No. 27.05, P.No. 144)	7570.00	Cum	79264.00
7.20	Item No.(13) Providing and fixing collapsible steel gate in one / two leaves with hot rolled vertical channels of 18 x 9 x 3 mm minimum size, crossings of M.S. flats of size 18 x 5 mm T or E section for runner of minimum 40 x 6 mm size for flange, M.S. flat for top runner of minimum size 40 x 12 mm with roller wheels conforming to grade F.G. 150 fitted with snap headed rivets of minimum size 6 mm max. spacing of vertical channels be 100 mm enclosed gate position and clear space of 150 mm between two sets of crossings with hold fasts, stoppers, spaces, handles, locking arrangement and one coat of red lead primer and oil painting etc. complete. (I.S. 105211983). Spec. No. Bd. T. 52 Page No. 511 (S.S.R. I. No. 39.26 P. No. 182)	3736.00	Sqm	26900.00
4.05	Item No.(14) Providing and fixing machine cut machine polished 18 mm to 20 mm thick telephone black / Amba White / Cat bary brown / RBI red / Ocean Brown granite stone for treads and risers of steps and staircases of approved colour and shade with rounded moulding and three grooved line for the treads on bed of 1:4 Cement mortar including float filling joints with neat cement slurry curing polishing and cleaning etc. complete. (S.S.R.I.No. 33.35, P. No. 158)	4138.00	Sqm	16759.00
5.40	Item No. (15) Providing and fixing in position (as per 1868 / 1982) Aluminium sliding window of three tracks with rectangular pipe 95 x 38.10 x 0.90 mm at weight 0.637 kg/Rmt. with window frame bottom track section 92 x 31.75 x 1.30 mm at weight 1.070 kg/Rmt.. Top and side track section 92 x 31.75 x 1.30 mm at weight 0.933 kg/Rmt. The shutter should be of bearing bottom 40 x 18 x 1.25 mm at weight 0.417 kg/Rmt. Inter locking section 40 x 18 x 1.10 mm at weight 0.469 kg/Rmt. and handle and top section 40 x 18 x 1.25 mm at weight 0.417 kg/Rmt. As per detailed drawings and as directed by Engineer in charge with all necessary Aluminium sections fixtures and fastenings such as roller bearing in nylon casting and self locking catch fitted in vertical section of shutter including 5 mm thick plain glass and aluminium mosquito net shutter with stainless steel (S.S.R. I. No. 39.41 P. No. 184)	5826.00	Sqm	31461.00
64.34	Item No.(16) Providing internal cement plaster 12mm thick in single coat in cement mortar 1:5 without neeru finish to concrete or brick surfaces, in all positions including scaffolding and curing etc. complete. Spe. No. :Bd. L.2 Page No. 368 (S.S.R. I. No. 32.03 P. No. 153)	257.00	Sqm	16535.00

QTY.	PARTICULARS OF ITEMS	RATE	UNIT	AMOUNT
70.70	Item No.(17) Providing sand faced plaster externally in cement mortar using approved screened sand, in all positions including base coat of 15 mm thick in cement mortar 1:4 using waterproofing compound at 1 kg per cement bag curing the same for not less than 2 days and keeping the surface of the base coat rough to receive the sand faced treatment 6 to 8 mm thick in cement mortar 1:4 finishing the surface by taking out grains and curing for fourteen days scaffolding etc.complete. Spec. :Bd.L.7 Page No. 369 (S.S.R. I. No. 32.11 P. 153)	599.00	Sqm	42352.00
64.34	Item No.(18) Providing & applying washable oil-bound distemper of approved colour and shade to old & new surfaces in two coat including scaffolding, preparing the surfaces. (excluding the primer coat.) etc. complete.Spec. No. :Bd. P 5 Page No. 413 (S.S.R.I.No. 36.11, P. No. 167)	43.00	Sqm	2767.00
70.70	Item No.(19) Providing and applying two coats of exterior weather shield paint of approved manufacture and of approved colour to the plastered surfaces including cleaning ,preparing the plaster surface ,applying primer coat ,scaffolding if necessary, and watering the (S.S.R.I.No.35.26 P. No. 165)	238.00	Sqm	16828.00
25.04	Item No. (20) Providing and fixing corrugated galvanised iron sheets of 0.63mm thick (24 B.W.G.) for roofing without wind tiles including fastening with galvanised iron screws and bolts, lead and bitumen washers as per drawing etc. complete.(Weight of 5.5 kg/sq.m.). (S.S.R. I.No. 38.05 P. No. 171)	1042.00	Rgm	26092.00
0.13	Item No. (21) Providing and fabricating structural steel work in rolled sections like joists, channels, angles, tees etc. as per detailed design and drawings or as directed including cutting, fabricating, hoisting, erecting, fixing in position making riveted / bolted /welded connections without connecting plates, braces etc. and including one coat of anticorrosive paint and over it two coats of oil painting of approved quality and shade etc. complete (S.S.R. I.No. 23.02 P. No. 129)	85585.00	Rgm	10716.00

Total RS. 433712.00


For Pawan Engineers, Latui


NAME OF WORK : PROPOSED CONSTRUCTION OF WEIGHT SCALE BOTTOM UNIT UNDER SMART PROJECT
SCHEME IN GUT NO. 71 OF AT BHOISMUDRA TQ LATUR AND DIST LATUR
FOR - SVR KRUSHI MITRA PRODUCER COMPANY LTD. AT AKHARWAI, TQ LATUR DIST LATUR

MEASUREMENT SHEET

S.R.	Particulars	No.	L	B	D	Qty.	Unit.
1	Excavation for Foundation in Earth,Soils of all types, sand, Gravel And Soft murum, Foundation etc.	6	1.50	1.50	0.30	4.05	
	For footing column	1	3.00	1.50	0.40	1.80	
	Steps						
	Total					5.85	Cum
2	Excavation for foundation in hard murum etc. complet.	6	1.50	1.50	0.30	4.05	
	For footing column						
	Steps						
	Total					4.05	Cum
3	Providing and laying c.c.1:3:6 for foundation and bedding etc. complete.	6	1.50	1.50	0.05	0.68	
	For footing column	1	3.00	1.50	0.05	0.23	
	Steps	1	8.00	3.15	0.05	1.26	
	For Godown						
	Total					2.16	Cum
4	Providing and laying R.C.C. M-20 for foundation & footing etc.	6	1.20	1.20	0.30	2.59	
	For footing column						
	Steps						
	Total					2.59	Cum
5	Providing and casting in situ R.C.C. M-20 for R.C.C. Column Etc Complete	6	0.23	0.40	1.05	0.58	
	For Column footing to Plinth	6	0.23	0.40	3.00	1.66	
	For Column Above Plinth						
	Steps						
	Total					2.24	Cum.
6	Providing and casting in situ C.C. M-20 for R.C.C. beams and lintels etc. complete						
	Plinth level						
	Hort Beam	4	3.78	0.23	0.30	1.04	
	Vert Beam	3	2.71	0.23	0.30	0.56	
	Hort Beam	4	3.78	0.23	0.40	1.39	
	Vert Beam	3	2.71	0.23	0.40	0.75	
	Total					3.74	Cum.
7	Providing and laying Cast in situ/Ready Mix cement concrete M-20 of trap/ granite/ quartzite/ gneiss metal for R.C.C. chajja as Chajja	3	1.50	0.30	0.050	0.07	
	Steps						
	G.F.					0.07	Cum.
8	Providing and fixing HYSD bars for various R.C.C. works etc. complete.						
	Footing	2.59				207.36	
	Column	2.24				134.14	
	Beam.	3.74				224.60	
	Steps						
	Total					566.09	Kg
	Total.					0.57	M.T.
9	Providing soling 80 mm. Dry trap metal etc. complete						
	For Below Flooring						
	For Godown	1	8.00	3.15	0.10	2.52	
	Total					2.52	Cum

S.R.	Particulars	No.	L	B	D	Qty.	Unit.
10	Filling in plinth with contractors hard murum etc complet. For Below Flooring For Godown	1	8.00	3.15	0.30	7.56	
					Total	<u>7.56</u>	Cum
11	Providing and laying second class B.B. Masonary in plinth and foundation etc For External Wall Plinth level Hort Beam Vert Beam	4 3	3.78 2.71	0.23 0.23	0.30 0.30	1.04 0.56	
					Total	<u>1.60</u>	Cum
12	Providing & laying 2nd class B.B. masonry in superstructure in C.M.1:4 prop. etc. For External Wall Hort Beam Vert Beam Deduction For Opening RS W	4 3 -1 -3	3.78 2.71 3.00 1.50	0.23 0.23 0.23 0.23	2.50 2.50 2.40 1.20	8.69 4.67 -1.66 -1.24	
		G.F.			Net	<u>10.47</u>	Cum
13	Providing and fixing collapsible steel gates in two leaves, with channel pickets, pivoted flat Staircase	1	3.00	--	2.40	7.20	
						<u>7.20</u>	Sqm
14	Providing and fixing machine cut machine polished 18 mm to 20 mm thick telephone Staircase	3 3	3.00 3.00	0.30 --	-- 0.15	2.70 1.35	
					Total	<u>4.05</u>	Sqm
15	Providing and fixing in position (as per 1868 / 1982) Alluminium sliding window of three GROUND FLOOR W	3	1.50	--	1.20	5.40	
						<u>5.40</u>	Sqm
16	Providing internal cement plaster 12mm thick in single coats in cement mortar 1:5 Wall Deduction For Opening W RS	2 2 -3 -1	8.00 3.15 1.50 3.00	-- -- -- --	3.45 3.45 1.20 2.40	55.20 21.74 -5.40 -7.20	
		G.F.			Net	<u>64.34</u>	Sqm
17	Providing sand faced plaster externally in c.m. using Kharasalia/Kasaba or similar type of 15mm thick in c.m. 1:4 Ground Floor Deduction For Opening W RS	2 2 -3 -1	8.46 3.61 2.00 3.00	-- -- -- --	3.60 3.60 1.50 2.40	60.91 25.99 -9.00 -7.20	
		G.F.			Net	<u>70.70</u>	Sqm
18	Providing washable oil bound distemper in two coats etc, complete						
					Qty as per It. No.	<u>64.34</u>	Sqm.
19	Providing and applying two coats of exterior weather shield paint of approved						
					Qty as per It. No.	<u>70.70</u>	Sqm.

S.R.	Particulars	No.	L	B	D	Qty.	Unit.
20	Providing and fixing corrugated galvanised iron sheets of 0.63mm thick (24 B.W.G.) for Roofing	1	8.00	3.13	--	25.04	
						Total	25.04 Sqm
21	Providing and fabricating structural steel work in rolled sections like joists, channels, Staircase	25.04		Sqm/5kg/Sqm		125.20	
						Total	125.20 KG
						Total	0.13 MT



For Pawan Engineers, Latvi

LEAD CHARGES CALCULATION

(AS PER STATE e- SSR 2021-22)

Sr.	Material	Location of	Lead in KM.	Lead	Pay load	Lead	Net Lead	Unit
1	2	3	4	5	6	7	8	9
1	Metal 40mm. Size/ Stone	Local	3.00	1154.54	6.00	192.42	192.42	/Cum.
2	Metal below 40mm. Size	Local	3.00	1154.54	5.75	200.79	200.79	/Cum.
3	Sand	Pohner	60.00	4925.75	5.75	856.65	856.65	/Cum.
4	Hard Murum	Gairan	3.50	1196.63	6.00	199.44	199.44	/Cum.
5	Cement	--						
6	Bricks	--						/1000Nos.
7	Steel	--						/1000Nos.

Royalty charges 141.34 /Cum.


For Pawan Engineers, Latu

368

617

NAME OF WORK : PROPOSED CONSTRUCTION OF WEIGHT SCALE BOTTOM UNIT UNDER SMART PROJECT SCHEME IN GUT NO. 71 OF AT BHOISMUDRA TQ LATUR AND DIST LATUR

RATE ANALYSIS STATE e-D.S.R (2021-22)

1	Excavation for foundation in earth, soils of all types, sand, (S.S.R. I.No. 21.02 P.No. 115)	193.00	
	(D) Sub Total	<u>193.00</u>	
	(E) Add 4% For Municipal Council Areas	7.72	
	Total Rs.	<u>193.00</u>	Cum.
2	Excavation for foundation in hard murum including removing (S.S.R. I.No. 21.06 P.No. 115)	212.00	
	(D) Sub Total	<u>212.00</u>	
	(E) Add 4% For Municipal Council Areas	8.48	
	Total Rs.	<u>212.00</u>	Cum.
3	M-10 for foundation and bedding etc. (S. e-S.S.R. I.No. 24.01 P.No. 131)		
	(A) Rate as per SSR 2021-22	5538.00	
	(D) Sub Total	<u>5538.00</u>	
	(E) Add 4% For Municipal Council Areas	221.52	
	(F) Add Transportation Of Material		
	Add lead for sand 0.47 cum/cum @ Rs. 856.65/cum.	402.63	
	Add lead for 40 mm metal 0.175 cum/cum @	134.69	
	Add lead for 20 mm metal 0.24 cum/cum @	48.19	
	Total Rs.	<u>5538.00</u>	Cum.
4	M-20 for R.C.C.Footing etc. (S- S.S.R. I.No. 25.11, P.No. 133)		
	(A) Rate as per SSR 2021-22	6666.00	
	(D) Sub Total	<u>6666.00</u>	
	(E) Add 4% For Municipal Council Areas	266.64	
	(F) Add Transportation Of Material		
	Add lead for sand 0.425 cum/cum @ Rs.856.65/cum.	364.08	
	Add lead for 20 mm metal 0.57 cum/cum @	114.45	
	Add lead for 10/12 mm metal 0.28 cum/cum @	56.22	
	Total Rs.	<u>6666.00</u>	Cum.
5	Providing and laying Cast in situ/Ready Mix cement concrete M-20 of trap / granite /quartzite/ gneiss metal for R.C.C. (S.S.R. I. No. 25.31 P. No. 134)		
	(A) Rate as per SSR 2021-22	12987.00	
	(D) Sub Total	<u>12987.00</u>	
	(E) Add 4% For Municipal Council Areas	519.48	
	(F) Add Transportation Of Material		
	Add lead for sand 0.425 cum/cum @ Rs.856.65/cum.	364.08	
	Add lead for 20 mm metal 0.57 cum/cum @	114.45	
	Add lead for 10/12 mm metal 0.28 cum/cum @	56.22	
	Total Rs.	<u>12987.00</u>	PerCum.
6	Providing and laying Cast in situ/Ready R.C.C. beams and lintels as per detailed designs and drawings or as directed (S.S.R.I. No. 25.50 P. 135)		
	(A) Rate as per SSR 2021-22	11483.00	
	(D) Sub Total	<u>11483.00</u>	
	(E) Add 4% For Municipal Council Areas	459.32	
	(F) Add Transportation Of Material		
	Add lead for sand 0.425 cum/cum @ Rs.856.65/cum.	364.08	
	Add lead for 20 mm metal 0.57 cum/cum @	114.45	
	Add lead for 10/12 mm metal 0.28 cum/cum @	56.22	
	Total Rs.	<u>11483.00</u>	PerCum.

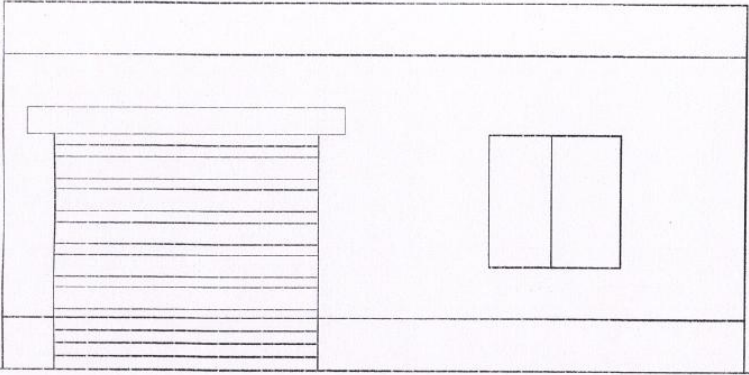
- 7 Providing and laying Cast in situ/Ready Mix cement concrete M-20 of trap/ granite/ quartzite/ gneiss metal for R.C.C. chajja as per detailed (S.S.R.I.No. 26.05, P.No. 137)
 (A) Rate as per SSR 2021-22 13111.00
 (D) Sub Total 13111.00
 (E) Add 4% For Municipal Council Areas 524.44
 (F) Add Transportation Of Material
 Add lead for sand 0.425 cum/cum @ Rs.856.65/cum. 364.08
 Add lead for 20 mm metal 0.57 cum/cum @ 114.45
 Add lead for 10/12 mm metal 0.28 cum/cum @ 56.22
Total Rs. 13111.00 PerCum.
- 8 Providing and fixing in position **TMT - FE - 500** bar reinforcement of various diameters for R.C.C. pile caps, (S.S.R. I.No.26.33, P.No. 139)
 (A) Rate as per SSR 2021-22 71778.00
 Sub Total 71778.00
 Add 4% For Municipal Council Areas 2871.12
Total Rs. 71778.00 PerM.T
- 9 Providing soling using 80mm. size trap metal in 15cm. layer (S.S.R. I.No.21.40 P.No. 118)
 (A) Rate as per SSR 2021-22 1322.00
 (D) Sub Total 1322.00
 (E) Add 4% For Municipal Council Areas 52.88
 (F) Add Transportation Of Material
 Add lead for metal 1.00 cum/cum @ Rs.192.42/cum. 192.42
Total Rs. 1322.00 Cum.
- 10 Filling in plinth and floors with **contractors material/brought** from outside and approved by Engineer incharge in layers of (S.S.R. I.No. 21.37, P.No. 117)
 (A) Rate as per SSR 2021-22 550.00
 (D) Sub Total 550.00
 (E) Add 4% For Municipal Council Areas 22.00
 (F) Add Transportation Of Material
 Add lead for Murum 1.00 cum/cum @ Rs. 196.15/cum. 196.15
Total Rs. 550.00 Cum.
- 11 Providing second class **Burnt Brick masonry** with conventional/ I.S. type bricks in cement mortar 1:6 in (S.S.R. I. No. 27.01 No. 144)
 (A) Rate as per SSR 2021-22 7343.00
 (D) Sub Total 7343.00
 (E) Add 4% For Municipal Council Areas 293.72
 (F) Add Transportation Of Material
 Add lead for sand 0.32 cum/cum @ Rs.856.65/cum. 274.13
Total Rs. 7343.00 PerCum.
- 12 Providing second class **Burnt Brick masonry** with conventional/ I.S. type bricks in cement mortar 1:6 in (S.S.R.I.No. 27.05, P.No. 144)
 (A) Rate as per SSR 2021-22 7570.00
 (D) Sub Total 7570.00
 (E) Add 4% For Municipal Council Areas 302.80
 (F) Add Transportation Of Material
 Add lead for sand 0.32 cum/cum @ Rs.856.65/cum. 274.13
Total Rs. 7570.00 PerCum.

13	Providing and fixing collapsible steel gate in one / two leaves with hot rolled vertical channels of 18 x 9 x 3 mm minimum (S.S.R. I. No. 39.26 P. No. 182) (A) Rate as per SSR 2021-22	3736.00 <hr/> Sub Total 3736.00 <hr/> Add 4% For Municipal Council Areas 149.44 <hr/> Total Rs. 3736.00 PerSqm.
14	Providing and fixing machine cut machine polished 18 mm to 20 mm thick telephone black / Amba White / Cat bary brown (S.S.R.I.No. 33.35, P. No. 158) (A) Rate as per SSR 2021-22 (D) Sub Total (E) Add 4% For Municipal Council Areas (F) Add Transportation Of Material Add lead for sand 0.022 cum/cum @ Rs.856.65/cum.	4138.00 <hr/> 4138.00 <hr/> 165.52 <hr/> 18.85 <hr/> Total Rs. 4138.00 Sqm.
15	Providing and fixing in position (as per 1868 / 1982) Alluminium sliding window of three tracks with rectangular pipe 95 x 38.10 (S.S.R. I. No. 39.41 P. No. 184) (A) Rate as per SSR 2021-22	5826.00 <hr/> Sub Total 5826.00 <hr/> Add 4% For Municipal Council Areas 233.04 <hr/> Total Rs. 5826.00 Sqm
16	Providing internal cement plaster 12mm thick in single coat in cement mortar 1:5 without neeru finish to concrete or brick (S.S.R. I. No. 32.03 P. No. 153) (A) Rate as per SSR 2021-22 (D) Sub Total (E) Add 4% For Municipal Council Areas (F) Add Transportation Of Material Add lead for sand 0.015 cum/cum @ Rs.856.65/cum.	257.00 <hr/> 257.00 <hr/> 10.28 <hr/> 12.85 <hr/> Total Rs. 257.00 PerSqm.
17	Providing sand faced plaster externally in cement mortar using approved screened sand, in all positions including base (S.S.R. I. No. 32.11 P. 153) (A) Rate as per SSR 2021-22 (D) Sub Total (E) Add 4% For Municipal Council Areas (F) Add Transportation Of Material Add lead for sand 0.033 cum/cum @ Rs.856.65/cum.	599.00 <hr/> 599.00 <hr/> 23.96 <hr/> 28.27 <hr/> Total Rs. 599.00 PerSqm.
18	Providing & applying washable oil-bound distemper of (S.S.R.I.No. 36.11, P. No. 167) (A) Rate as per SSR 2021-22	43.00 <hr/> Sub Total 43.00 <hr/> Add 4% For Municipal Council Areas 1.72 <hr/> Total Rs. 43.00 PerSqm.
19	Providing and applying two coats of exterior weather shield paint of approved manufacture and of approved colour to the (S.S.R.I.No.35.26 P. No. 165) (A) Rate as per SSR 2021-22	238.00 <hr/> Sub Total 238.00 <hr/> Add 4% For Municipal Council Areas 9.52 <hr/> Total Rs. 238.00 Sqm

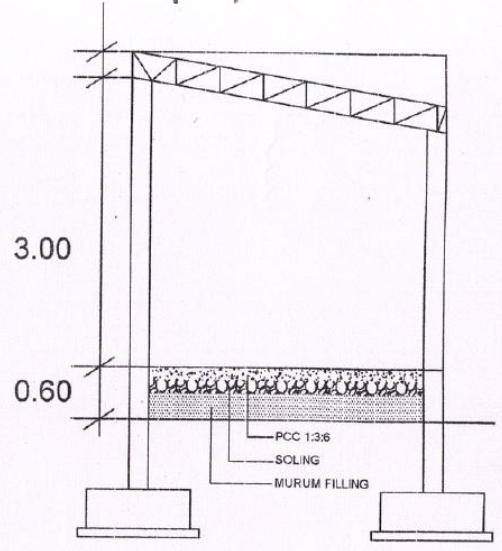
- 20 Providing and fixing corrugated galvanised iron sheets of 0.63mm thick (24 B.W.G.) for roofing without wind tiles (S.S.R. I.No. 38.05 P. No. 171)
- | | |
|--|-------------------------------|
| (A) Rate as per SSR 2021-22 | 1042.00 |
| (D) Sub Total | 1042.00 |
| (E) Add 4% For Municipal Council Areas | 41.68 |
| Total Rs. | <u>1042.00</u> PerRgm. |
-
- 21 Providing and fabricating structural steel work in rolled sections like joists, channels, angles, tees etc. as per detailed design and (S.S.R. I.No. 23.02 P. No. 129)
- | | |
|--|---------------------------|
| (A) Rate as per SSR 2021-22 | 85585.00 |
| (D) Sub Total | 85585.00 |
| (E) Add 4% For Municipal Council Areas | 3423.40 |
| Total Rs. | <u>85585.00</u> MT |

~~For Pawan Engineers, Latur~~

687

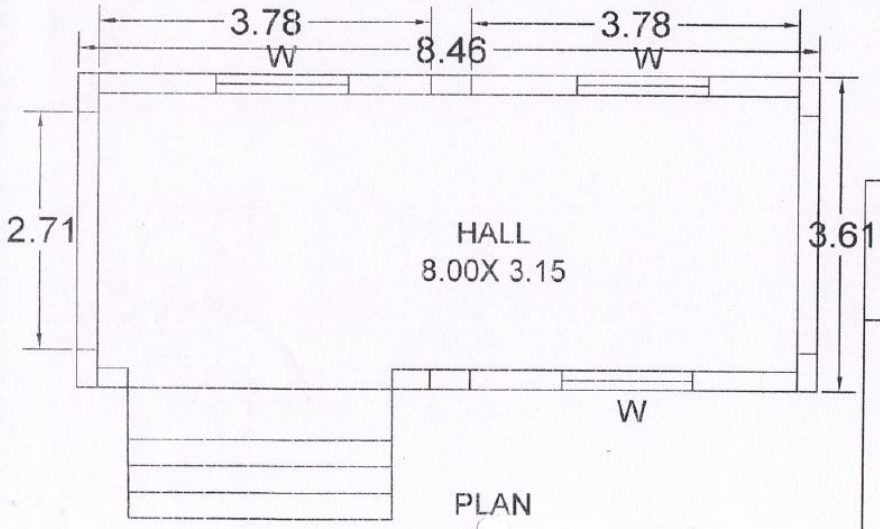


ELEVATION



SECTION AT A-A

313



PLAN

SCHEDULE OF OPENING

- 1. RS 3.00 X 2.40 ROULLING.
- 2. V 3.00X 0.60 VENTI.
- 3. W 2.00 X 1.50 WINDOW

SCHEDULE OF OPENING

[Signature]
of Pawan Engineers, Ltd